



# GMT MONTHLY MEMBERSHIP PROGRESS REPORT

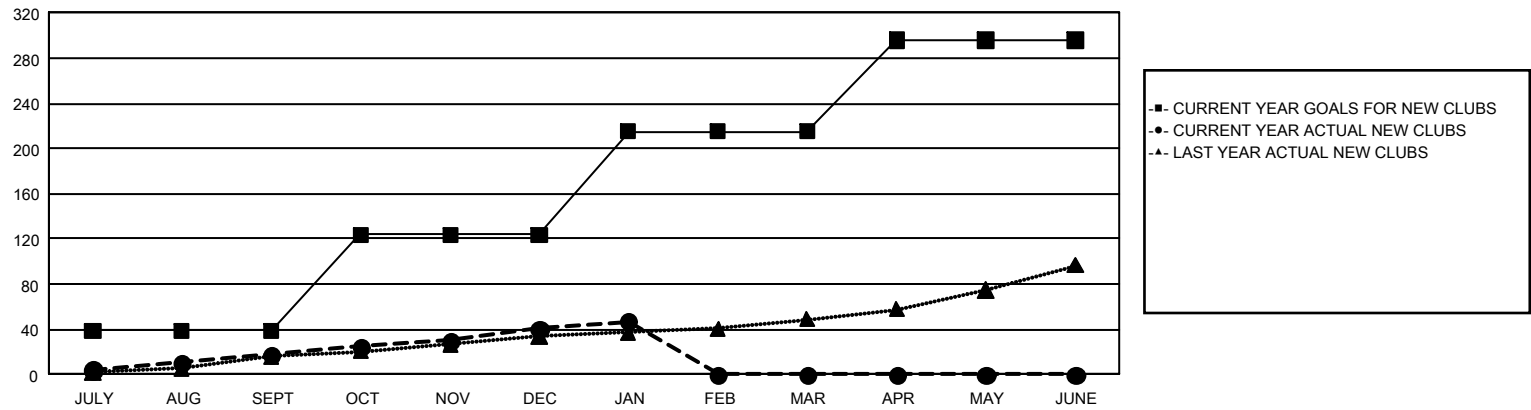
## GAT Constitutional Area 1

Results as of: 1/31/2025

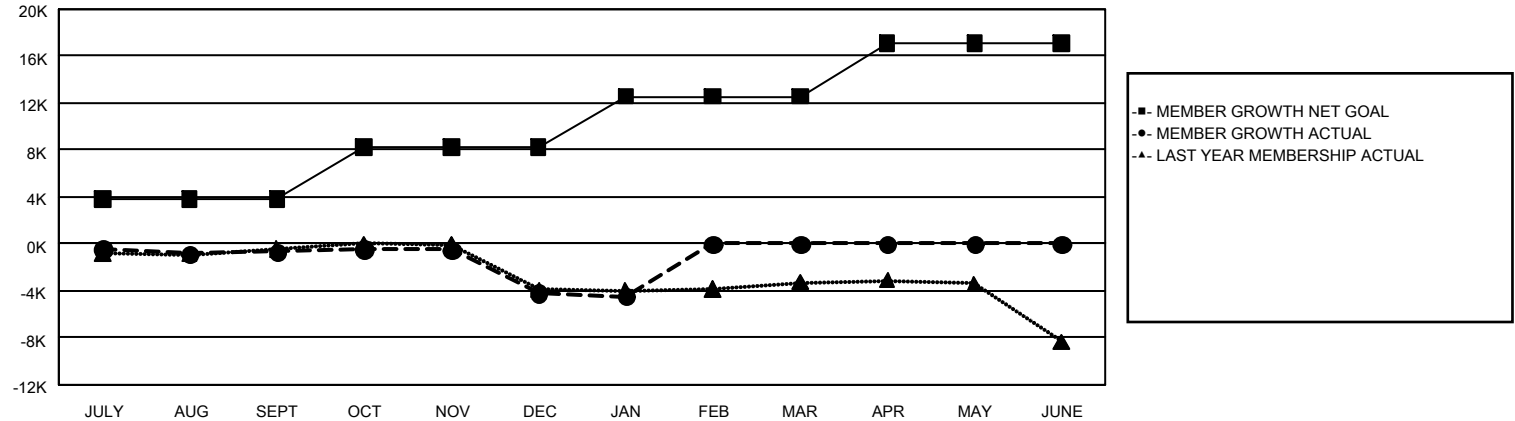
REPORT DOES NOT INCLUDE CLUBS IN UNDISTRICTED AREAS.

Clubs				Members			
RESULTS FOR 2024-2025				RESULTS FOR 2024-2025			
QUARTER	NEW CLUB GOAL	NEW CLUBS	DROPPED CLUBS	QUARTER	MEMBER GROWTH NET GOAL	MEMBER GROWTH ACTUAL	DROPPED MEMBERS ACTUAL (including transfers)
JULY/AUG/SEPT	39	18	39	JULY/AUG/SEPT	3,838	7,625	7,120
OCT/NOV/DEC	85	23	133	OCT/NOV/DEC	4,390	6,675	9,469
JAN/FEB/MAR	91	6	10	JAN/FEB/MAR	4,337	2,619	2,382
APR/MAY/JUNE	81	0	0	APR/MAY/JUNE	4,578	0	0

GOALS AND ACTUAL NEW CLUBS CUMULATIVE



GOALS AND ACTUAL MEMBERS CUMULATIVE



DROPPED CLUBS: 182		4,342 CLUBS OF 9,909 ADDED 1 OR MORE NEW MEMBERS	<u>GENDER DISTRIBUTION</u>	
			MALE	162,039 (62.79%)
			FEMALE	95,860 (37.14%)
<u>DROPPED MEMBERS</u>		<a href="#">CLICK HERE FOR CUMULATIVE MEMBERSHIP DATA</a>		
DECEASED	2,197		TOTAL FAMILY UNIT MEMBERS 0	
CLUB CANCELLED	1,709			
OTHER	14,934		FAMILY MEMBERS PAYING HALF DUES 0	
TOTAL	18,840			